



VERTICAL DOORS, INC.™
VerticalDoors.com

SIMPLY UPLIFTING™

542 3rd St. Lake Elsinore, CA 92530

TEL: (951) 273-1069, FAX: (951) 273-1854



CORVETTE "C6" 2005-2013

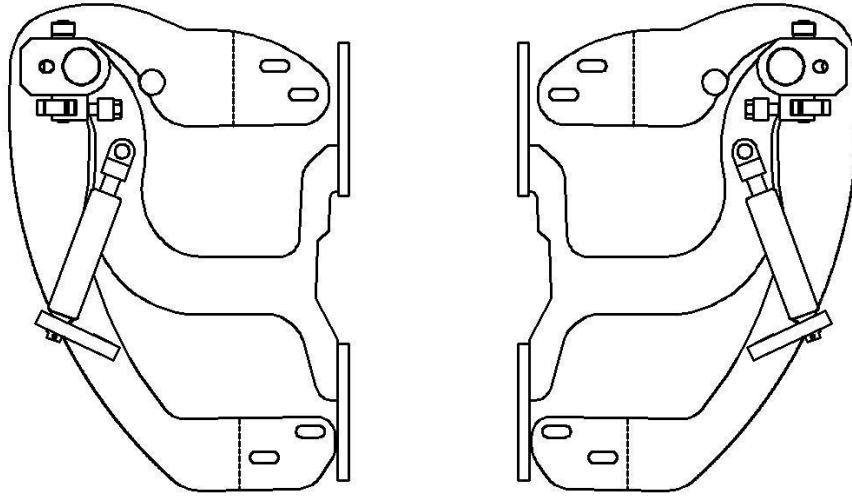
U.S. PATENTS

#6,808,223; #6,845,547; #7,140,075; #7,059,655

PATENTS AGGRESSIVELY ENFORCED!

**PLEASE CAREFULLY READ ALL INSTRUCTIONS BEFORE
ATTEMPTING TO INSTALL THIS PRODUCT.**

**FOR QUESTIONS PLEASE
CONTACT US AT (951) 273-1069**



THIS KIT INCLUDES:

➤ 8 M8-1.25X40MM BOLTS WITH WASHERS	➤ 2 SHOCKS 565 PSI
➤ 8 M8-1.25X30MM BOLTS WITH WASHERS	➤ 2 SHOULDER BOLTS WITH WASHERS
➤ RIGHT AND LEFT HINGE ASSEMBLY	➤ 2 PINS
➤ WIRE LOOM	➤ 2 FENDER BRACKETS 4 M6 X 1 BOLTS

TOOLS REQUIRED FOR INSTALLATION:

	➤ AIR RACHET, GRINDER AND CUTTER.
	➤ 7MM, 8MM, 10MM, 11MM, 13MM, SOCKETS AND EXTENSION.
	➤ FORK AND PHILLIP'S SCREW DRIVERS
	➤ SPACERS FOR THE DOOR GAP.
	➤ 3/16 ALLEN WRENCH
	➤ 1/4 & T15 TORX BIT
	➤ 9/16 WRENCH
	➤ LOCKTITE RED

OTHER TOOLS MAY BE NEEDED DEPENDING ON YOUR VEHICLE.

(Note: The pictures on the manual are for reference only they may not match your vehicle.)

1) Disconnect the battery.

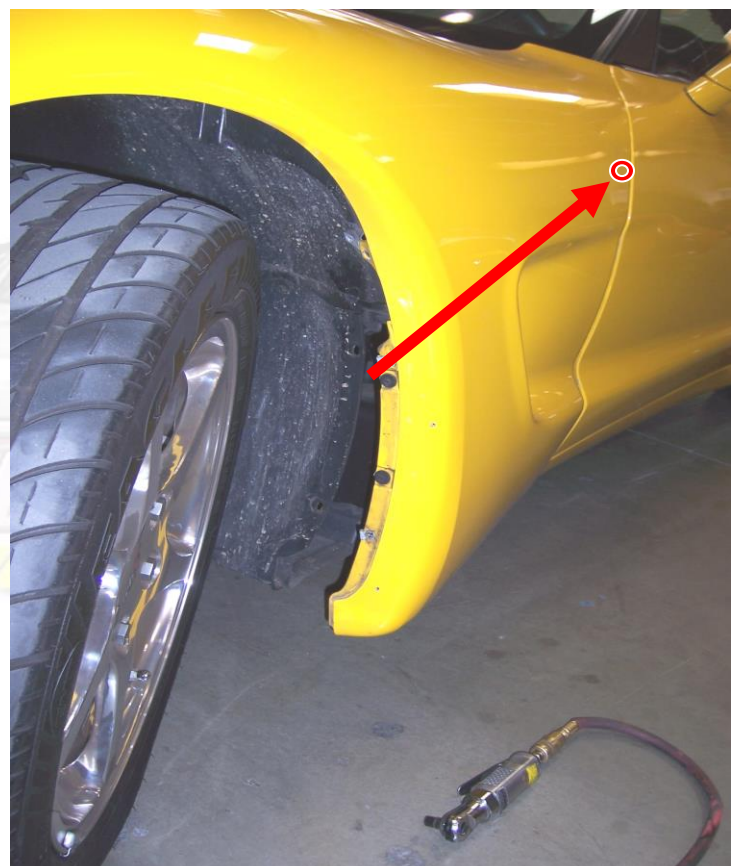
2) Remove fender.

Remove plastic clips from the wheel well. Note: Your vehicle may have different size bolts or type of fasteners.



Remove (2) 7mm bolts from the bottom of the fender.

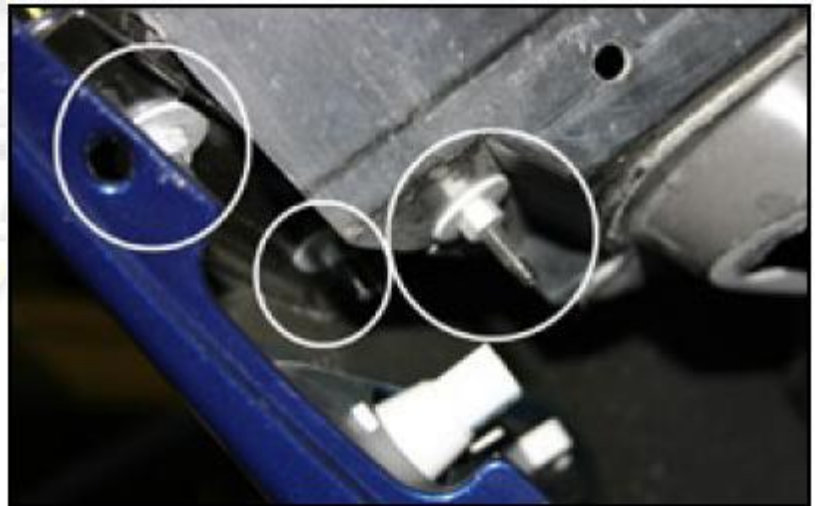
Remove (1) 7mm bolt by pulling on the fender and removing the plastic or foam cover located by the factory hinges. Pull on the fender and use a long extension to remove the 7mm bolt.



After you have removed the wheel well fasteners, reach in and remove the turn signal by disconnecting the wire harness and pushing backside clamps inward and pushing the light out.



Look inside inner fender and above where the turn signal was, unscrew three bolts.



Pull bumper cover towards you near bottom of headlight. Locate screw hole and cut fiberglass piece with Dremel tool cutter so that you can pull away fender.



Using 7mm socket, remove (4) screws from front bumper cover underneath hood area.



Pull upward on front bumper cover as shown and remove screw with T15 Torx wrench.

Continue removing the rest of the T15 screws front the top of the fender.

With T15 Torx wrench, remove bolt as shown.



After bolt is removed, slide cowl piece outward from the window and lift to remove.



Starting from the front of car, lift off fender and locate the only remaining 7mm screw that is attaching the fender to the rest of the body. The screw is located near the stock door hinge.



3) Modify Apron:



With the fender cover removed, use cutting wheel (power cutter) to cut off the pieces shown from the inner fender skirt lip.

4) Prepare body for new Vertical Door Inc. system:

The VDI kit needs a flat surface to work properly. You will have to grind the 2 bolts as shown and also cut a small piece of aluminum as shown in the pic.



When done it should look like the picture on the right.

Close door and use painters tape to secure the door to the body in preparation for factory hinge removal.

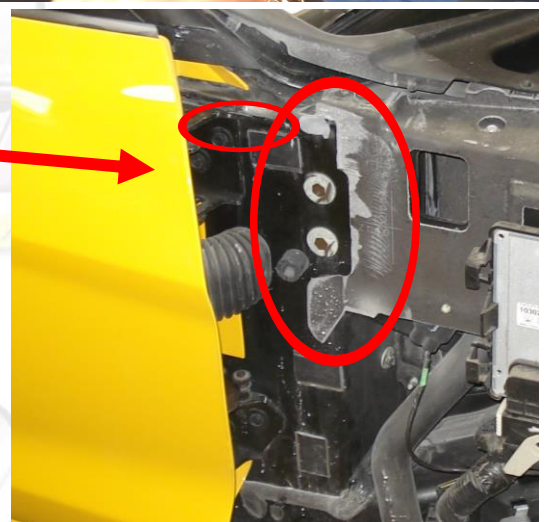
Insert the spacers after you have removed the factory hinges.

Remove (4) 13mm bolts that secure the factory hinges.

(You can make spacers by using paint mixing sticks and putting approx. 8 to 10 turns of tape.)

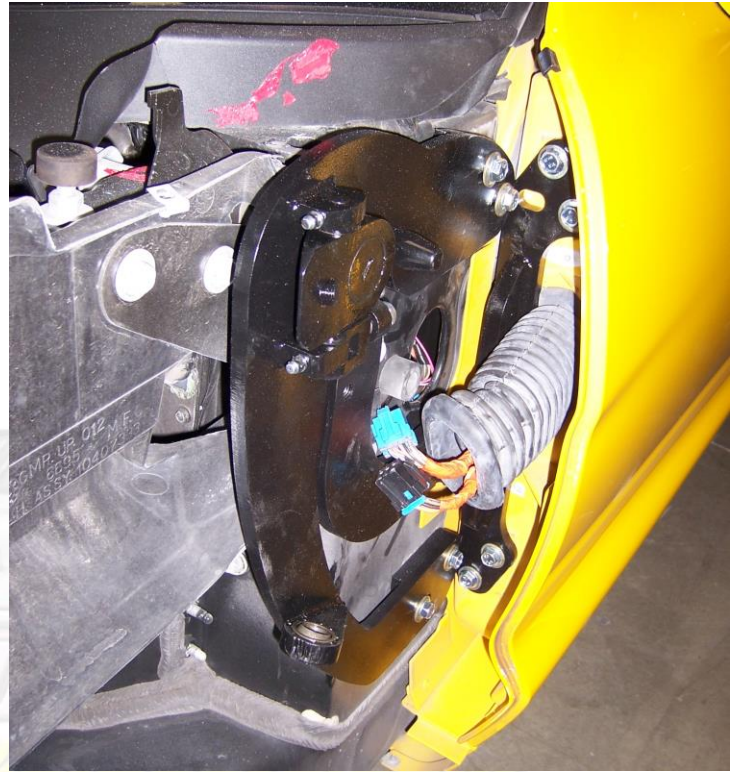
Note: spacers not included.

5) Install the New Vertical Doors Inc. System:



Use the fork to loosen the factory wire boot and unplug the wire harness, this will allow you to install the new VDI system. Make sure it's flat against all surfaces.

Hint Tighten the bolts on the door first and the bolts on the body second.*

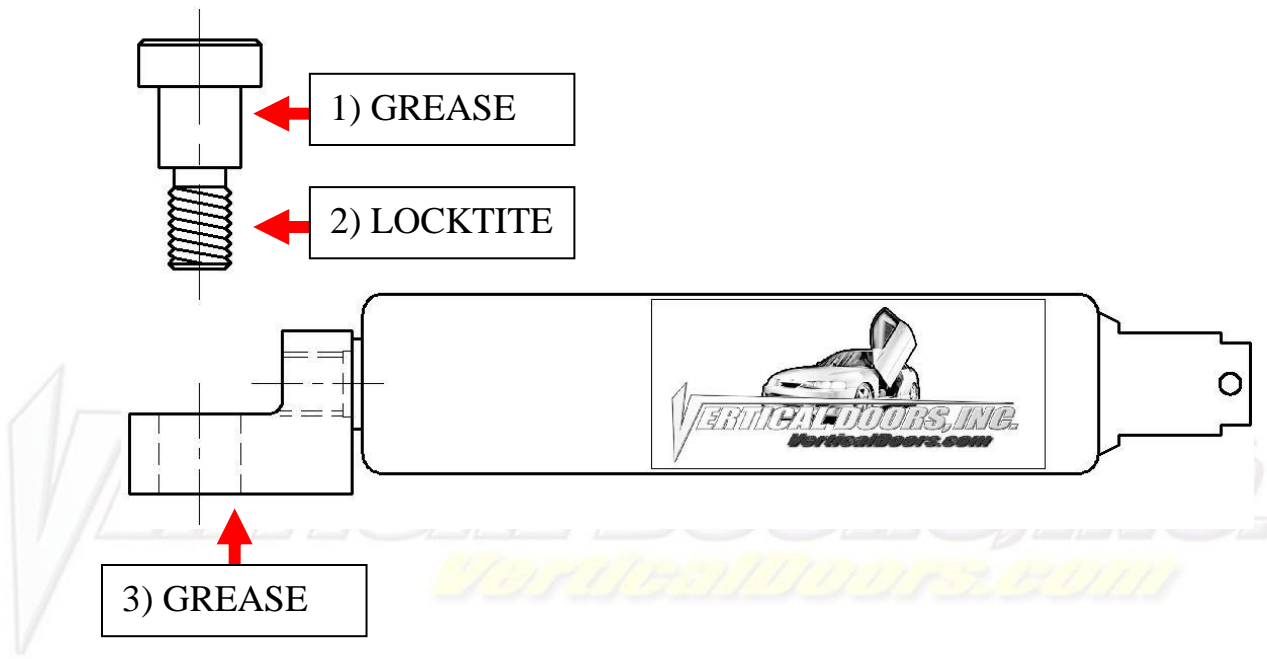


Add the bracket to the front of the windshield reservoir.



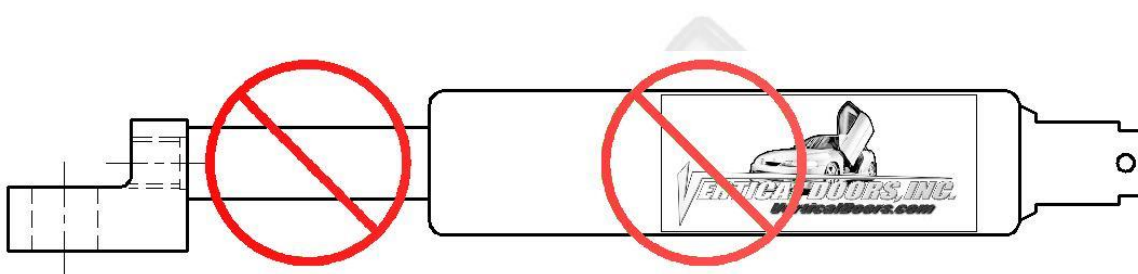
6) After you have removed the factory hinges you will have to reposition the windshield wiper reservoir to make room for the new Vertical Doors Inc. system. You will have to reposition the reservoir using the bracket provided. Make sure the new Vertical Doors Inc. system applies very little or no pressure to the reservoir. Use a zip tie to secure the reservoir to the top bolt hole.





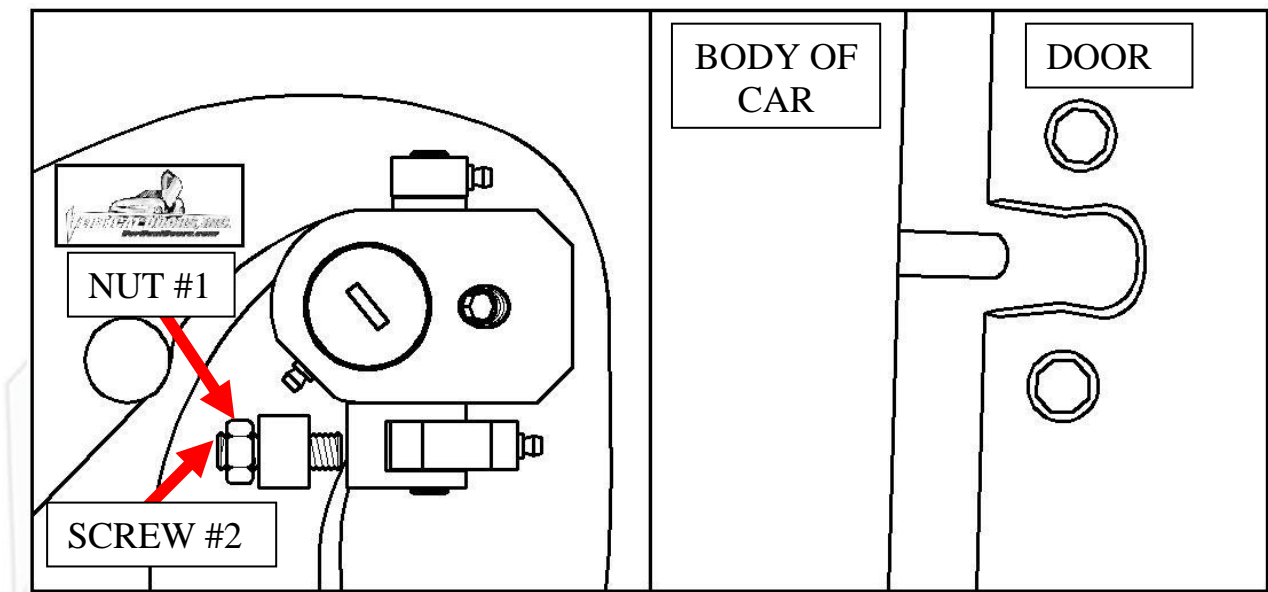
***IMPORTANT STEP: DO NOT SKIP THIS STEP. THIS STEP IS CRUCIAL IN YOUR INSTALLATION PROCESS, IF THIS STEP IS NOT COMPLETED WHEN INSTALLING THE VERTICAL DOOR KIT; ALL WARRANTIES ARE VOIDED, AND MAY CAUSE FUTURE PROBLEMS WITH YOUR VERTICAL DOOR SYSTEM.**

- 1ST, make sure you put grease on the body of shoulder bolt where the arrow is pointing.
- 2ND, make sure you put red Loctite, where the arrow is pointing, on thread of shoulder bolt.
- 3RD, make sure you put grease on the bottom side of the shock end.



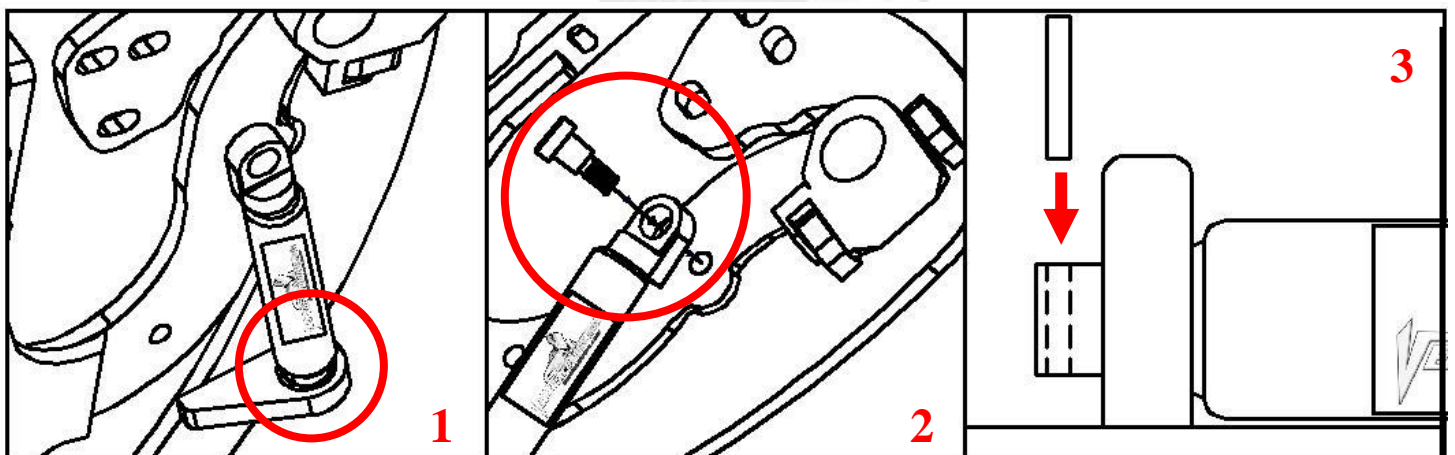
WARNING! THE USE OF ANY TYPE PLYERS, PAINT OR FOREIGN MATERIALS ON THE SHOCK'S BODY OR SHAFT WILL VOID THE WARRANTY.

7) Once hinge is locked in place, break nut #1 then turn Allen set screw #2 on fig until it hits the block then open the door and continue to adjust until the door matches with the striker, open and close door making sure it closes like factory.



Hint (leave #1 nut loose until shock is installed Allen set screw will have to be re-adjusted after shock is installed).*

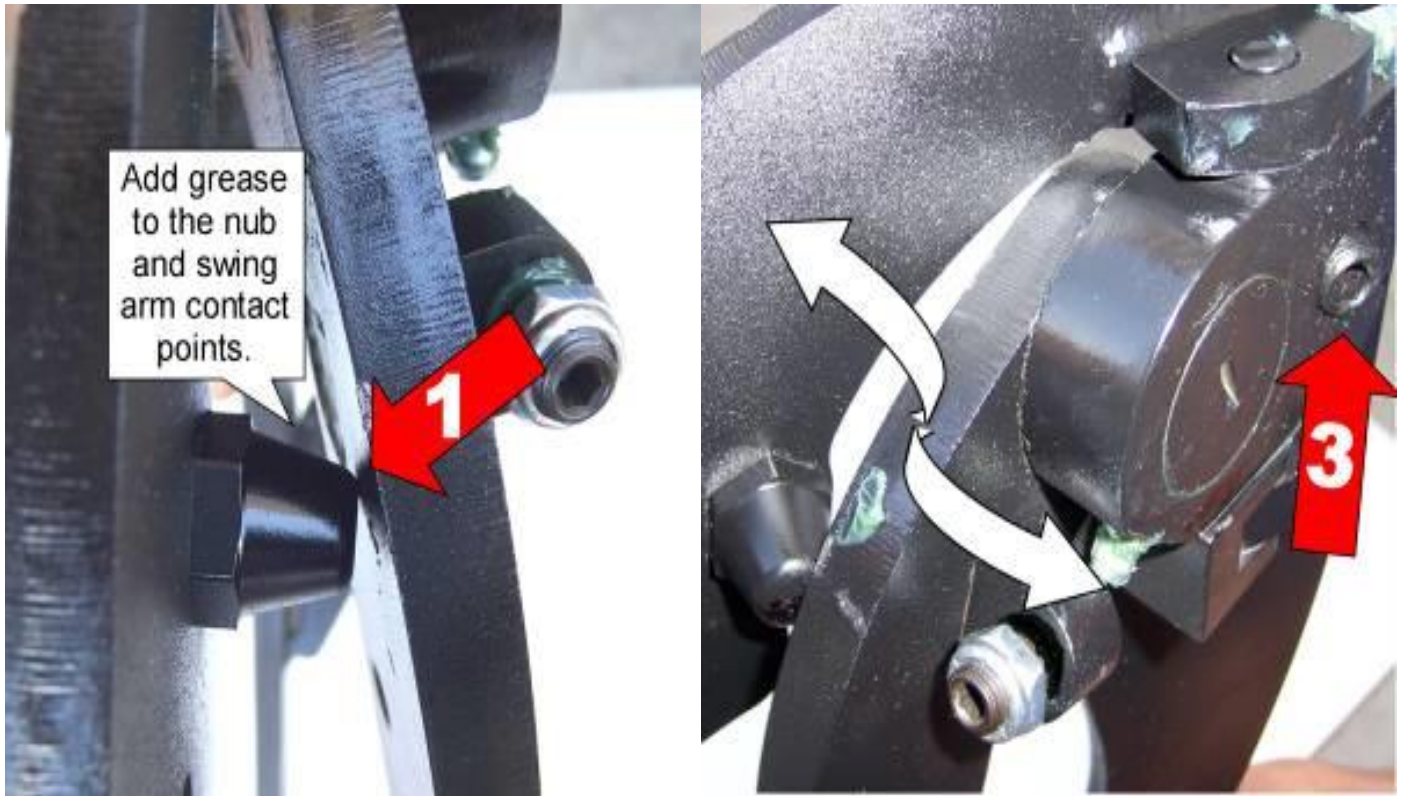
8) Install the shock.



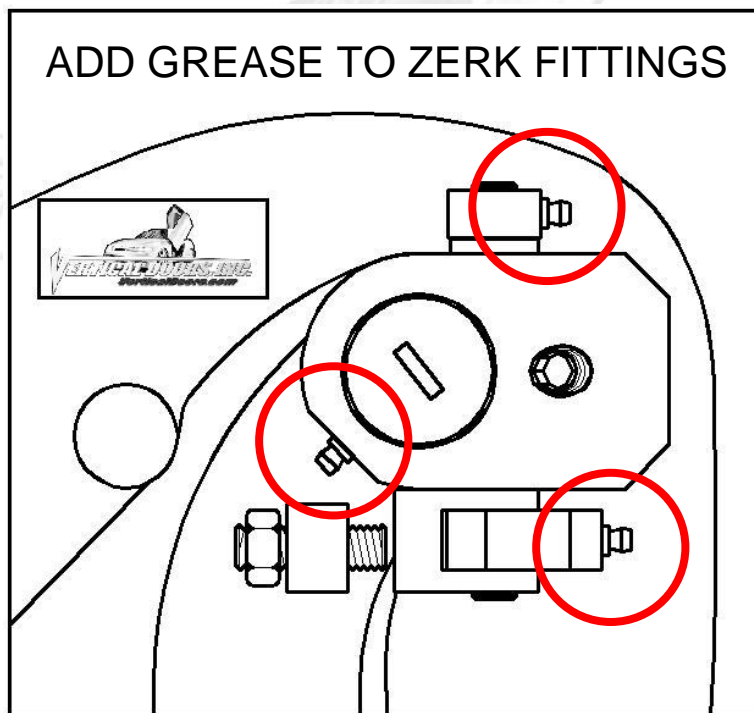
Hint (You will need a helper to raise the door). (Slip the spherical rod mount into the spherical ball bearing (1). Using a 1/4 Allen wrench, tighten the screw into the swing arm (2). After the shock is installed secure it by installing the pin in the bottom shock end (3).*

9) After shock is installed re-install door panel and lift the door. Adjust door opening screw #3 clockwise until distance between nub

and swing arm is enough so that the swing arm moves up and down freely.



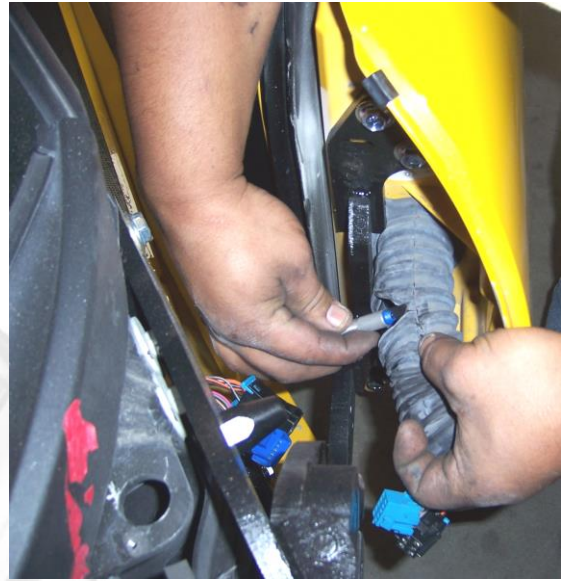
Hint (Fine tune the Allen set screw (#2) to realigned striker with door. After the door is aligned, test door by opening and closing, lifting and lowering door several times.*



Note: Do not install fender until the adjustment of the door is accurate, and the set screw is tightly secure. Also make sure everything is tight, adjustment is set and everything is Loctite.

10) Modify the factory wire boot:

You will have to cut the factory wire boot in half; half will be used for the body and the other half will be used for the door. Use supplied wire loom to protect exposed wires.



Your VDI system should look like the picture on the right.



Location for fender support bracket



11) Trim the inside of the fender and door as shown.

Use painter's tape to protect the paint that will not be cut.

Note: some models are equipped with door trims. If your vehicle has one you may need to move the fender trim forward about 1 inch.

12) Cut the inner lip of your fender to make room for the new Vertical Doors Inc. system.



Drill new hole for support bracket. use M6x1 bolt.

Use a power cutter and grinder to cut and take any sharp edges off. touch it up with paint to give it a finish look.

13) Lift the door and Replace the fender by reversing step 2 and 3.

Hint(Make sure the electrical wires don't get pinched enough to damage wires)*

14) For the other side just follow the same steps.

How to reset your Window Sensor:

Make sure both plugs are connected. Close both doors with the car on. Roll both windows up and hold the window switch up for 10 sec and roll down and hold for 10 sec. this should reset the window sensor. For more details contact your local Chevrolet dealer.

**Thank you for your purchase of the
CORVETTE C6 2005-2013**

VERTICAL DOORS INC. SYSTEM

VERTICAL DOORS, INC.
VerticalDoors.com

NOTE:

Vertical Doors Inc. assumes no responsibility for any damages caused by improper installation.